

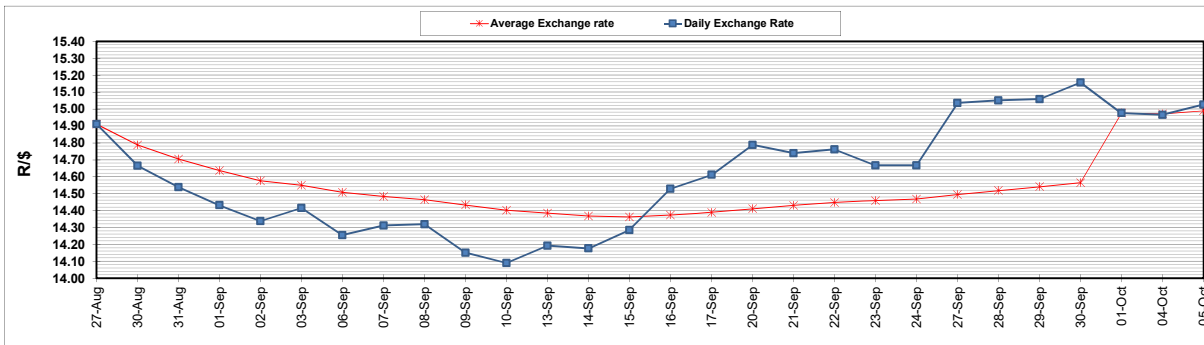
	PETROL 95 ULP	PETROL 93 ULP & LRP	DIESEL 0.05%	DIESEL 0.005%	ILL. PAR.
GAUTENG PUMP PRICE (SA c/l) AS FROM 06/10/2021	1,833.000	1,800.520	-	-	-
WHOLESALE PRICE (SA c/l) AS FROM 06/10/2021	-	-	1,571.780	1,575.180	980.488
SINGLE NATIONAL MAXIMUM RETAIL PRICE	-	-	-	-	1,240.000
BASIC FUEL PRICE - 05/10/2021 (SA c/l)	916.708	901.789	909.298	912.510	907.305
PRESS RELEASE CONTRIBUTION TO BFP 01/10/2021 - 05/10/2021 (SA c/l)	817.110	808.110	746.630	750.030	735.128
UNIT OVER/(UNDER) RECOVERY - 05/10/2021 (SA c/l)	(99.598)	(93.679)	(162.668)	(162.480)	(172.177)
AVERAGE BASIC FUEL PRICE 01/10/2021 - 05/10/2021	893.955	879.078	879.707	883.263	878.197
AVERAGE UNIT OVER/(UNDER) RECOVERY 01/10/2021 - 05/10/2021	(76.845)	(70.968)	(133.077)	(133.233)	(143.069)

### ANALYSIS MOVEMENT OF AVERAGE OVER/(UNDER) RECOVERY

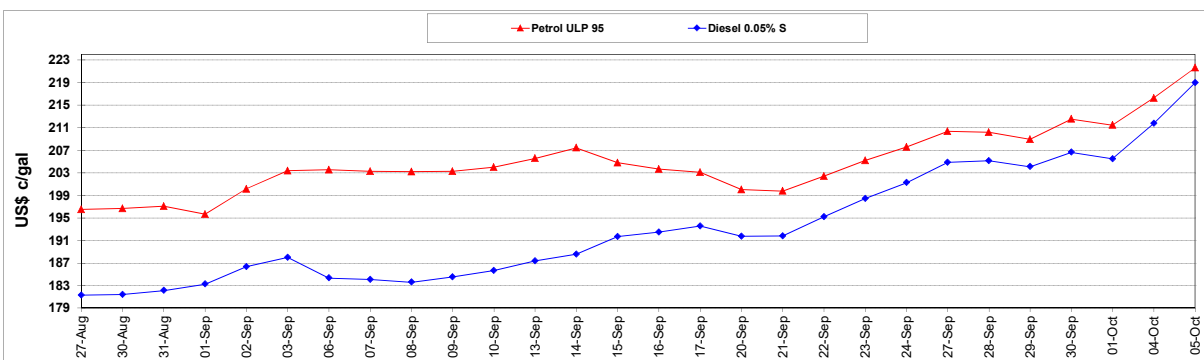
	PETROL 95	PETROL 93	DIESEL 0.05%	DIESEL 0.005%	ILL. PAR.
- MOVEMENT IN INTERNATIONAL PRODUCT PRICES	(51.581)	(46.125)	(108.216)	(108.271)	(118.251)
- MOVEMENT IN EXCHANGE RATE	(25.264)	(24.843)	(24.861)	(24.962)	(24.818)
AVERAGE UNIT OVER/(UNDER) RECOVERY 01/10/2021 - 05/10/2021	(76.845)	(70.968)	(133.077)	(133.233)	(143.069)

### R/\$ EXCHANGE RATE - (R/\$15.0260 - 05/10/2021)

#### EXCHANGE RATE USED IN BASIC FUEL PRICE



#### INTERNATIONAL PRODUCT PRICES OF BASKET USED IN BASIC FUEL PRICE



#### BASIC FUEL PRICE IN SA CENTS PER LITRE

